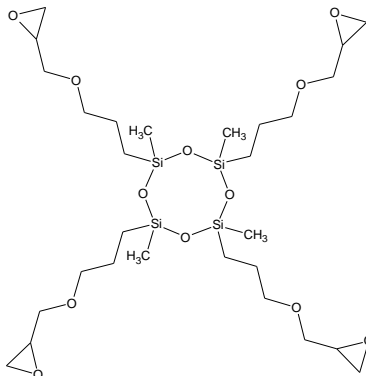


## TECH DATA SHEET

# CS-697

NOT AVAILABLE IN JAPAN



## DESCRIPTION

CS-697 is a polyglycidyl ether cyclosiloxane monomer. The structure above shows a representation of the predominant component. Low viscosity and low color make it ideal for formulating adhesives. This resin is very compatible with most organic resins.

## HIGHLIGHTS

- Multifunctional
- Low epoxy equivalent weight
- Thermal stability
- Low chloride
- Low viscosity
- Colorless
- Non-yellowing (UV exposure)

## TYPICAL PHYSICAL AND CHEMICAL PROPERTIES

PROPERTY	METHOD	RESULT
Appearance at Room Temperature	Visual	Colorless liquid
Viscosity @ 25°C (typical)	Haake Rheometer	200 cP
Functionality		4
Average Molecular Weight		697 daltons
Average Epoxy Equivalent Weight		174
Recommended Storage Temp		Room Temperature

*Data is for reference only and may vary depending on testing method used. The structure shown above is an idealized representation of a statistical distribution.*

## RECOMMENDED FORMULATION USE:

CS-697 is recommended for use as a base resin or diluent for epoxy formulations. Most standard epoxy curatives and catalysts will react with the CS-697.

## CONTACT:

### REQUEST A SAMPLE OR PLACE AN ORDER

Customer Support

☎ 858-348-1122

✉ [support@designermoleculesinc.com](mailto:support@designermoleculesinc.com)

REF: DMI Part Number: R1362